



SANTA MONICA-MALIBU UNIFIED SCHOOL DISTRICT

The Future of Samohi

April 17, 2018
PTSA Presentation



Agenda

1. Ongoing Samohi Projects
2. Discovery Building
 - Architectural Design
 - 21st Century Learning
3. Samohi – Looking Ahead



Completed and Ongoing Projects

21st Century Classroom Technology



Science Quad Upgrade



Science Quad Stairs



Stadium Lighting Upgrade



Sealy Field Makeover



Sealy Field Ribbon Cutting



Sealy Field Lighting



Electrical and Data Bank



Tennis Court Reconstruction



Interim Housing



Interim Housing (Interior)



Pico Fence Improvements



Preparing for Discovery Demolition of Science and Tech





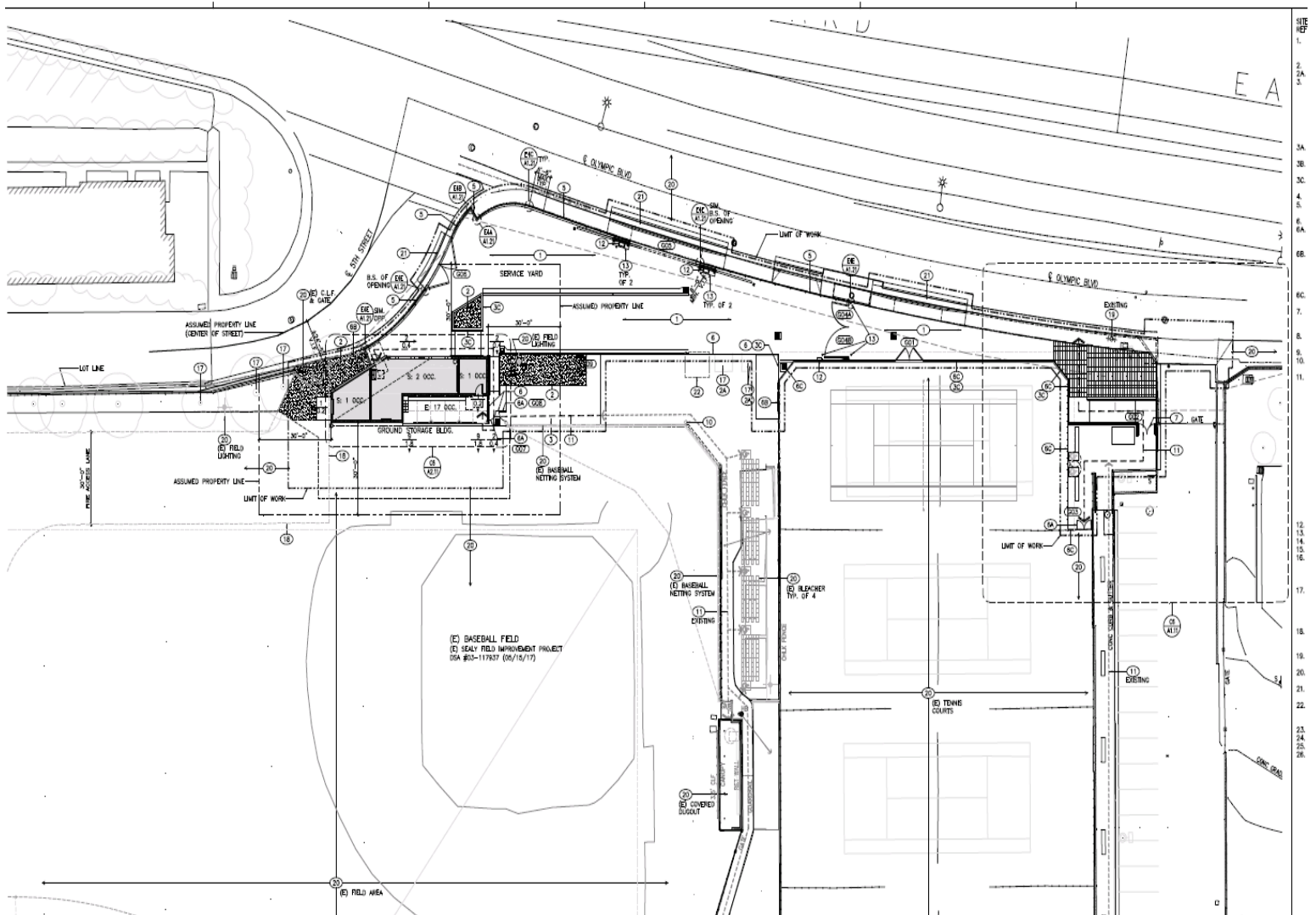
HVAC

Summer Project to Replace HVAC in:

- Language
- English – Classrooms and Office
- History – H127

Work will begin in July and continue into September

Olympic Spur Redesign



Wayfinding/Standards

Developing campus **standards** for wayfinding including:

- **Signage and graphics** including campus maps
- **Landscape/hardscape** materials including planting materials, pathway dimensions and surfaces
- **Lighting Fixture Types and locations**
- **Fencing** design and materials





Discovery Building



Discovery Building Program

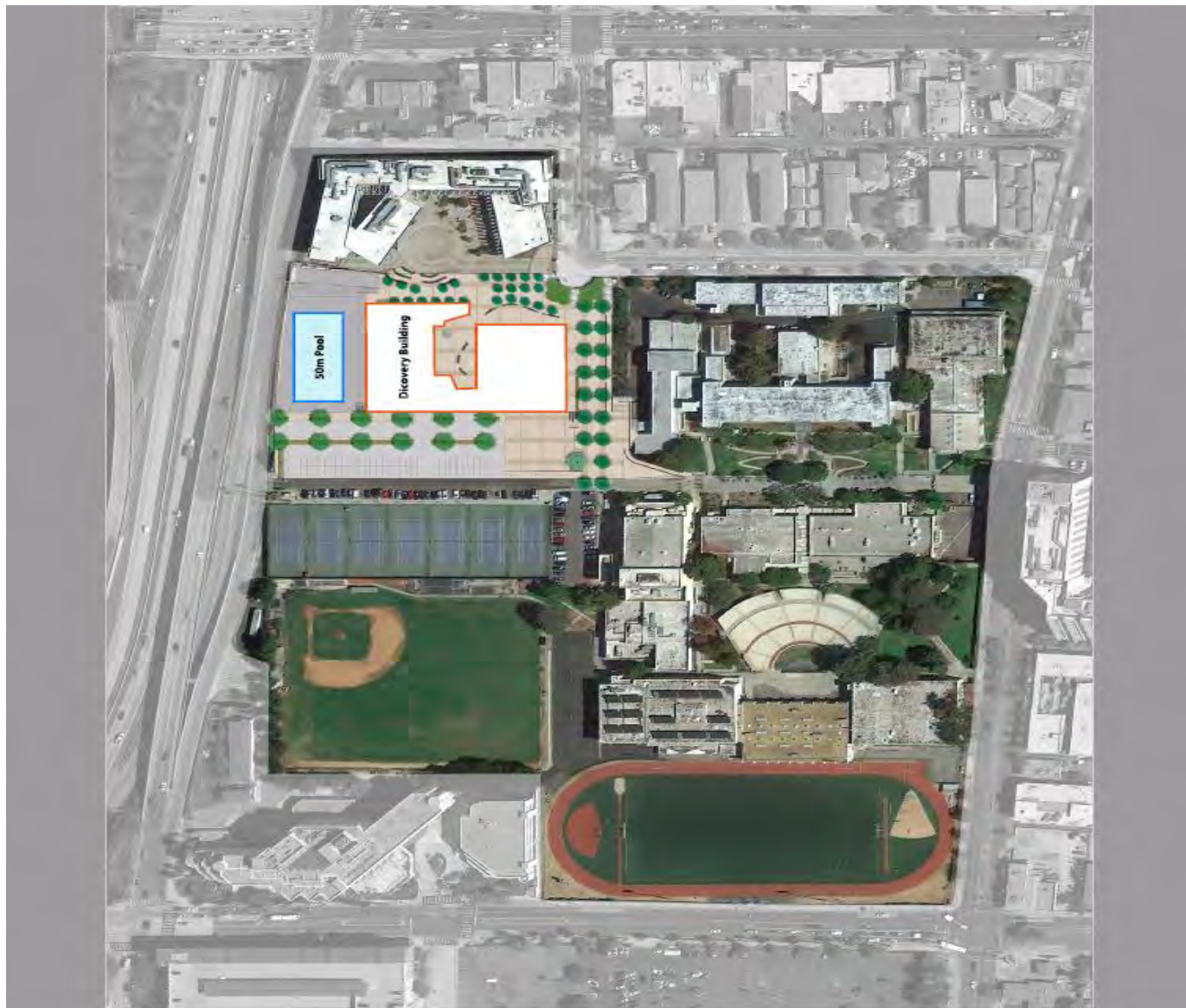
- 3-Story Open Building Concept
- Design team HED/MRY Architects with Pamela Burton Landscape (local firms)
- Incorporates **M** and **O** House Offices
- 38 Classrooms including Computer & Science Labs
- Common Areas & Seminar Rooms
- 50 Meter Pool (Olympic size)
- Full Service District Kitchen
- Indoor/Outdoor Dining Facilities
- Three Multipurpose Rooms
- Parking for 288 cars total -184 (interior)



Participants in the Design Process

- Teachers/Administrators - attended workshops and site visits to explore 21st Century Learning Styles
- Parents and students SM Community Were Surveyed
- Samohi Site Committee – meets monthly
- Food Services Staff and Student Users were interviewed
- District Technology Staff
- District Facilities Use Staff – (Performance and Events)
- Campus Athletics- (Teachers and Coaches)
- District Maintenance and Operations staff
- Various District Staff were consulted on safety
- District Transportation Staff
- City of Santa Monica/Cal Trans
- A Community presentation was made on May 2, 2017

Discovery Site



Olympic Gate



Michigan Avenue (looking east)



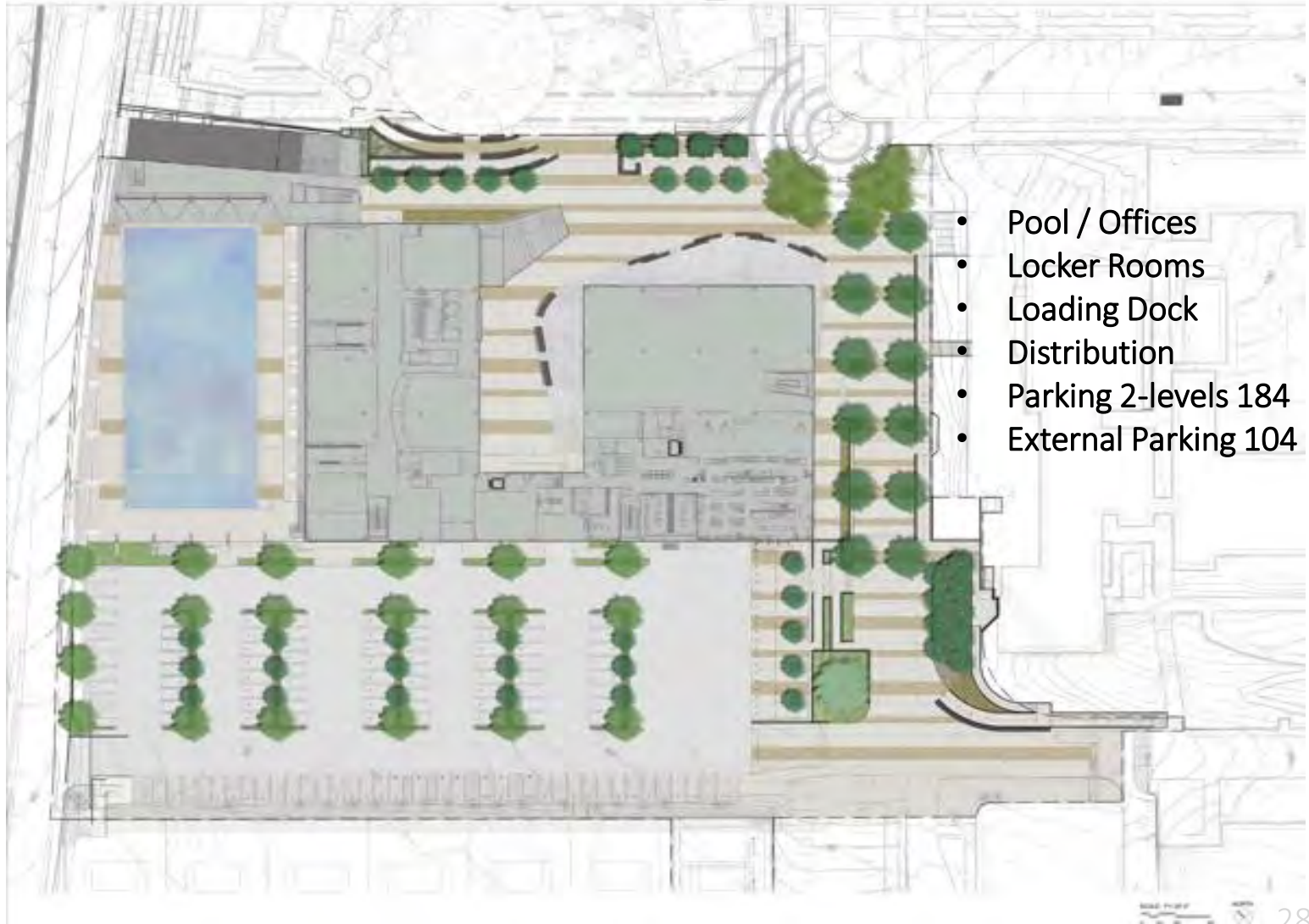
Centennial Quad (looking north)



Quad Entrance (looking west)



B1 Level - Pool, Parking, Loading Dock, Distribution



The floor plan shows a large building with a central corridor. On the left side, there is a large dining area with many tables and chairs. To the right of the corridor, there is a large lounge area with a curved sofa and a large table. Further right, there is a kitchen area with a large island and a staff lounge. The right side of the plan features a large storage area and a reception area. The plan also shows a staircase and an entrance area.

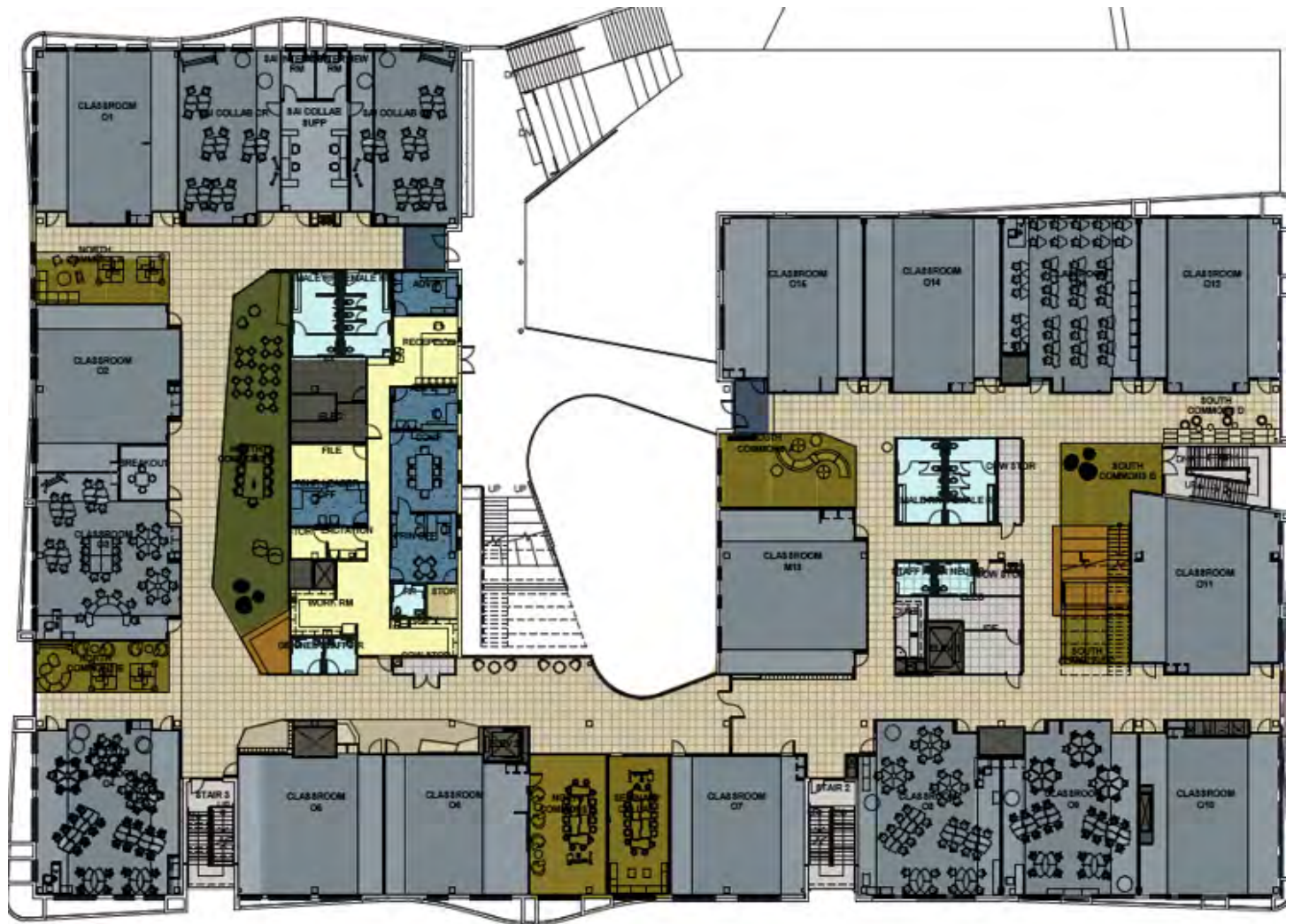
Cafeteria



Multipurpose Rooms



Second Floor Plan



2nd Floor Courtyard



Bleacher Stair



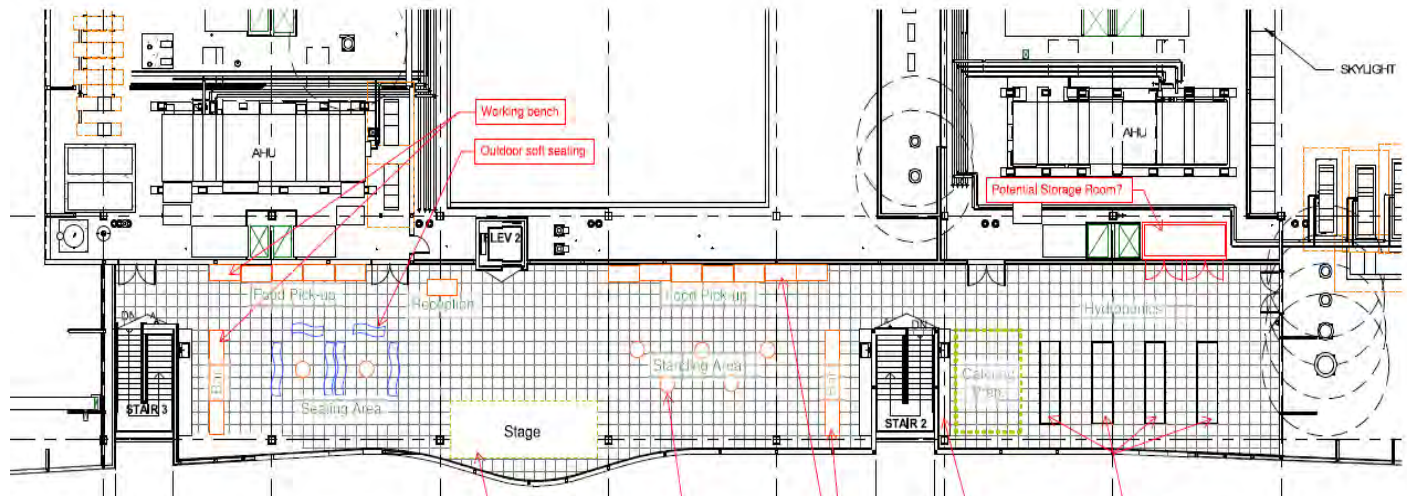
Third Floor Plan



Commons Area



Rooftop Classroom



Olympic Pool



Campus Pool





Timeline

- Campus Plan Approved 2016
- HED/MRY Architects on Board – Spring '17
- Design Complete/DSA Submittal – Spring '18
- Abate Exist Buildings – Now
- Demo –Summer 2018
- DSA Approval - Winter 2018
- Construction Start – Spring 2019
- Completion/Move in – Fall 2021



Samohi Looking Ahead

Future Campus Plan



Future Campus Plan





Q and A



Thank you